



CD248 Polyclonal Antibody

Catalog No	YP-Ab-13999
Isotype	IgG
Reactivity	Human;Rat;Mouse;
Applications	WB;ELISA
Gene Name	CD248
Protein Name	Endosialin
Immunogen	The antiserum was produced against synthesized peptide derived from the Internal region of human CD248. AA range:341-390
Specificity	CD248 Polyclonal Antibody detects endogenous levels of CD248 protein.
Formulation	Liquid in PBS containing 50% glycerol, 0.5% BSA and 0.02% sodium azide.
Source	Polyclonal, Rabbit,IgG
Purification	The antibody was affinity-purified from rabbit antiserum by affinity-chromatography using epitope-specific immunogen.
Dilution	Western Blot: 1/500 - 1/2000. ELISA: 1/20000. Not yet tested in other applications.
Concentration	1 mg/ml
Purity	≥90%
Storage Stability	-20°C/1 year
Synonyms	CD248; CD164L1; TEM1; Endosialin; Tumor endothelial marker 1; CD248
Observed Band	80kD
Cell Pathway	Membrane ; Single-pass type I membrane protein .
Tissue Specificity	Expressed in tumor endothelial cells but absent or barely detectable in normal endothelial cells. Expressed in metastatic lesions of the liver and during angiogenesis of corpus luteum formation and wound healing. Expressed in vascular endothelial cells of malignant tumors but not in normal blood vessels. Expressed in stromal fibroblasts.
Function	function:May play a role in tumor angiogenesis.,online information:Endosialin,PTM:May be N-glycosylated.,PTM:O-glycosylated with sialylated oligosaccharides.,similarity:Contains 1 C-type lectin domain.,similarity:Contains 1 EGF-like domain.,similarity:Contains 1 Sushi (CCP/SCR) domain.,tissue specificity:Expressed in tumor endothelial cells but absent or barely detectable in normal endothelial cells. Expressed in metastatic lesions of the liver and during angiogenesis of corpus luteum formation and wound healing. Expressed in vascular endothelial cells of malignant tumors but not in normal blood vessels. Expressed in stromal fibroblasts.,
Background	function:May play a role in tumor angiogenesis.,online information:Endosialin,PTM:May be N-glycosylated.,PTM:O-glycosylated with



sialylated oligosaccharides.,similarity:Contains 1 C-type lectin domain.,similarity:Contains 1 EGF-like domain.,similarity:Contains 1 Sushi (CCP/SCR) domain.,tissue specificity:Expressed in tumor endothelial cells but absent or barely detectable in normal endothelial cells. Expressed in metastatic lesions of the liver and during angiogenesis of corpus luteum formation and wound healing. Expressed in vascular endothelial cells of malignant tumors but not in normal blood vessels. Expressed in stromal fibroblasts.,

matters needing attention

Avoid repeated freezing and thawing!

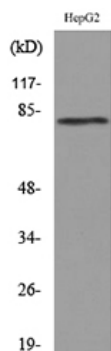
Usage suggestions

This product can be used in immunological reaction related experiments. For more information, please consult technical personnel.

Products Images



Western Blot analysis of HepG2 cells using CD248 Polyclonal Antibody. Secondary antibody(catalog#:RS0002) was diluted at 1:20000



Western blot analysis of lysate from HepG2 cells, using CD248 Antibody.